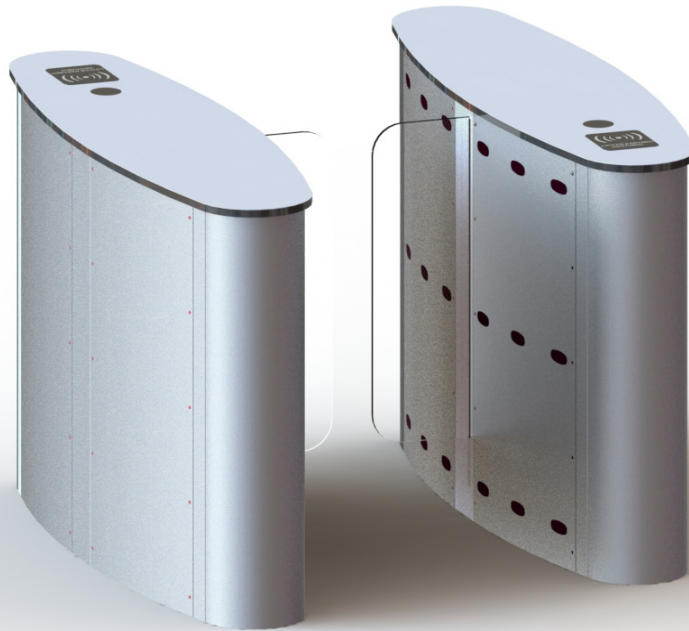


SPEED GATE WR-226



BODY	Main frame is galvanized steel, side and front panels are 304 quality stainless steel, top panel is 304 quality stainless steel
WING	Angular movement, 10 mm plexiglass (Opt.: Impact resistant 10 mm tempered glass)
WEIGHT	Single body ~ 140 kg Double body ~ 170 kg
ENERGY	176-264 VAC 50 Hz Standby 10W - Transient 80W
OPERATION TEMPERATURE	- 20 / + 60 °C
SYSTEM	Wings Normally Open / Wings Normally Closed
OPTIONS	Side panels are specially colored plexiglass, black glass top, membrane coating, granite

Stylish and reliable construction. Glass and Granite option

