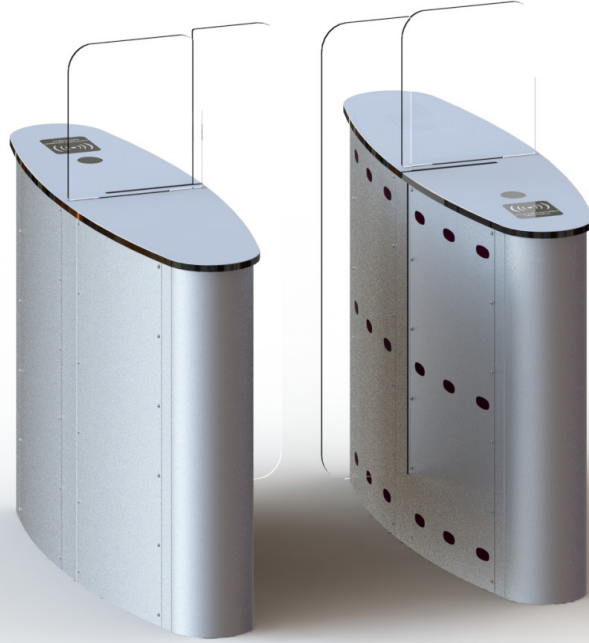


# SPEED GATE WR-228



BODY	Main frame is galvanized steel, side and front panels are 304 quality stainless steel, top panel is 304 quality stainless steel
WING	Angular movement, 10 mm plexiglass (Opt.: Impact resistant 10 mm tempered glass)
WEIGHT	Tekli gövde ~ 150 kg Çiftli gövde ~ 190 kg
ENERGY	176-264 VAC 50 Hz Standby 10 W - Transient 100 W
OPERATION TEMPERATURE	- 20 / + 60 °C
SYSTEM	Wings Normally Open / Wings Normally Closed
OPTIONS	Side panels are specially colored plexiglass, black glass top, membrane coating, granite

Both Stylish and Safe

