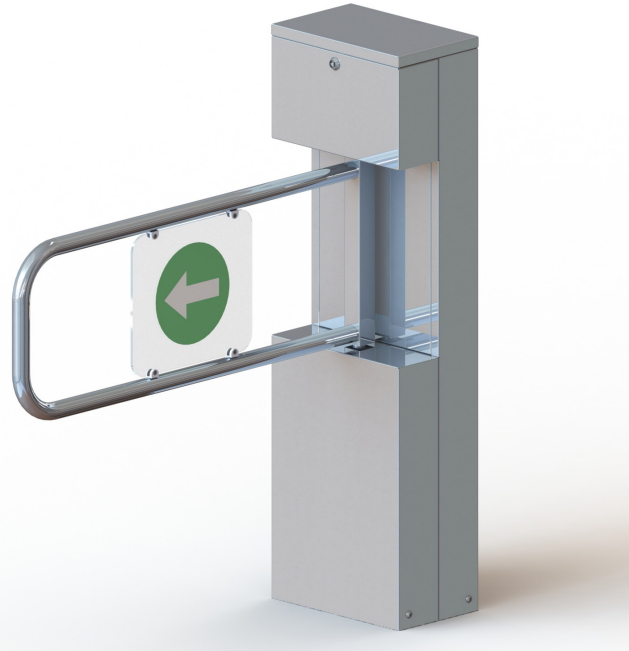


VIP TURNSTILE WR-322-B



BODY	Body 1.5 mm 304 stainless steel
ARM	38x2 mm aluminum profile middle plexi
WEIGHT	~ 32 kg
ENERGY	176-264 VAC 50 Hz Standby ~15 W. - Max. ~40 W.
OPERATION TEMPERATURE	- 20 / + 60 °C
ACCESSORIES	Remote control transceiver unit / Counter / Card Reader / (Safety) Photocell Sensor

It is one of the preferred products due to its robust structure and economical.

