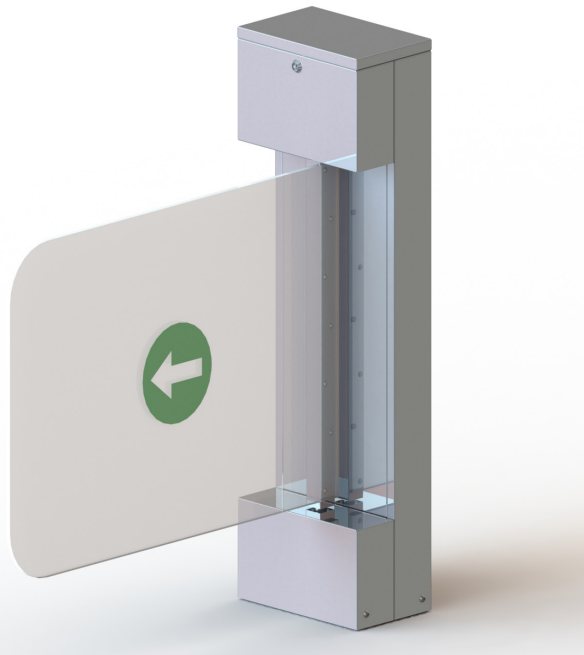


VIP TURNSTILE WR-324-C



BODY	Body 1.5 mm 304 stainless steel
ARM	10 mm plexiglass wing
WEIGHT	~ 35 kg
ENERGY	176-264 VAC 50 Hz Standby ~15W. - During the transition, max. ~40 W.
OPERATION TEMPERATURE	- 20 / + 60 °C
ACCESSORIES	Remote control transceiver unit / Counter / Card Reader / (Safety) Photocell Sensor

It adds prestige to its environment with its wide wings, stylish and economical structure.

